

7th Annual Regional Integrated Mental Health Conference

April 22-24, 2016, West Baden Springs Hotel, West Baden, Indiana

Hosted by the Indiana Psychiatric Society

Conference Fact Sheet

ABOUT THE CONFERENCE

- Conference site has been West Baden Springs Hotel since inaugural event April, 2010
- Conference offers accredited continued medical education programming, a requirement for practicing physicians
- First year, April, 2010, drew 34 physician attendees to the single day event. Since then, the conference has seen steady growth and expanded to include Friday as well as Sunday.
- In 2016 we will open with a Thursday evening reception in an attempt to offer increased networking and socialization opportunities for registrants and their guests. An emphasis on involving resident and early career psychiatrists remains. And once again, the speaker panel will be a diverse group of national and regional experts lecturing on integrated care, psychopharmacology, and the future of psychiatry.

ABOUT CONFERENCE PARTICIPANTS

Conference Registrants

State Representation

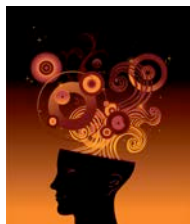
- ❖ 70% **Indiana**; primarily residing in the greater Indianapolis area. These psychiatrists represent **Midtown Community Mental Health Center, Eskenazi Health, Indiana University Hospitals and School of Medicine**, etc.
- ❖ 15% **Kentucky**; primarily residing in the greater Louisville area
- ❖ 15% other states including, but not limited to:
 - Alabama
 - California
 - Colorado
 - Illinois
 - Maryland
 - Ohio
 - Tennessee
 - Texas
 - Virginia

Profession Representation

- ❖ 82% physicians (95% psychiatrists)
- ❖ 5% nurses
- ❖ 13% other medical professionals (ie: hospital administrators)

Demographics

- ❖ More than 50% of attendees are between the ages of 50 and 69.
- ❖ More than 12% of attendees are 70 or older
- ❖ Most attendees are married
- ❖ Most attendees have children ranging in age from toddlers to college graduates



7th Annual Regional Integrated Mental Health Conference

April 22-24, 2016, West Baden Springs Hotel, West Baden, Indiana

Hosted by the Indiana Psychiatric Society

Demographics continued...

- ❖ Many balance positions with multiple employers including private practice, hospitals, training hospitals, teaching universities, retirement communities, VA hospitals, community mental health centers, etc.
- ❖ Nearly 70% practice in an outpatient setting

Subset: Resident Physicians

Resident physicians are doctors who have completed their medical degree and are now in training to be psychiatrists.

- ❖ Between the ages of 28 and 35
- ❖ Primarily married
- ❖ Many with newborns or looking to start a family in the coming months/years
- ❖ Indiana resident physicians live in the greater Indianapolis area
- ❖ Kentucky resident physicians live in the greater Louisville or Lexington areas

In the past several months, this group of physicians has had the most significant increase in participation amongst all members of the Indiana Psychiatric Society.

Conference Exhibitors and Sponsors

Corporate interest has grown exponentially throughout the years. From nine supporters in 2009, to more than 28 in 2015, exhibit space routinely sells out more than two months prior to the conference.

Industries Represented

- | | |
|--|-----------------------------------|
| ❖ Pharmaceutical Companies | ❖ Physician Recruiters |
| ❖ Electronic Medical Records Companies | ❖ Corrections Institutions |
| ❖ Genetic Testing Companies | ❖ Telepsychiatry Companies |
| ❖ Hospitals | ❖ Hospitals |
| ❖ Risk Management Providers | ❖ Community Mental Health Centers |
| ❖ Medical Device Companies | ❖ TMS Companies |